

SeaLife®

Cameras, lighting and accessories 2021



SeaLife®

Micro 3.0, Sea Dragon 3000F



Micro 3.0



SportDiver & iPhone XS



SportDiver & iPhone XS



Micro 3.0



Micro 3.0, Sea Dragon 3000F



Micro 3.0 Pro 5000 Set



RM-4K Pro 2000 Set



SportDiver



For over 25 years, SeaLife has captured incredible memories of your undersea encounters with our award-winning cameras, Sea Dragon lighting and Flex-Connect accessories.

Where will your next underwater adventure take you?

SeaLife®
SEA DRAGON® flex-connect®

SeaLife Micro 3.0: Great Pictures Made Easy



micro3.0™

Item SL550
Experience the undersea world with the permanently sealed, flood-proof SeaLife Micro 3.0 underwater camera. The easy-to-use Micro 3.0 is ready to dive right out of the box. No O-rings to maintain, and no need to worry about leaks. Just charge it and go!

The brilliant performance of the Micro 3.0 comes from the 16 megapixel SONY® CMOS sensor that captures amazing color and detail. Small and ergonomic, the Micro 3.0 camera is easy to handle underwater, operating with three wide “Piano Key” controls. An Easy Setup Guide provides a fast and intuitive way to select a color correction mode for your diving environment, allowing you more time diving and less time scrolling through menus.

micro3.0™ Underwater Camera



- TECHNICAL FEATURES**
- Permanently sealed: no O-rings to maintain
 - 16 megapixel SONY® image sensor for sharp colorful images
 - 4K Ultra HD Video @ 30fps and 1080p HD video @ 120fps
 - Focus from 15in / 40cm to infinity
 - 260K hi-res 2.4” TFT color LCD
 - Internal 2000mAh Li-ion Battery: 3+ hours of use

- SPECIAL FEATURES**
- Five Land & Sea™ scene modes with color correction
 - Wireless downloading with SeaLife Micro 3.0+ App
 - Three built-in underwater color correction filters
 - 100° Ultra-Wide Angle Lens fits everything in the shot
 - RAW/JPEG image format: JPEG & DNG still image files
 - Burst Shooting Mode: 10 16MP photos per second
 - Manual White Balance to customize color correction
 - 64GB internal memory: thousands of photos, hours of video
 - Easy Setup Mode with on-screen guide and easy menus
 - Waterproof to 200ft / 60m
 - Compact design for easy handling and lightweight travel
 - Expandable with popular SeaLife® accessories
 - Rubber Armored: impact & shock resistant body



WiFi to wirelessly view, download and share pictures and videos to smart device using the **SeaLife Micro 3+ app**



2.4” LCD display and “Piano Key” controls for easy underwater use

micro3.0™ Camera Sets



Micro 3.0 Pro 3000 Set
Item SL552
Ideal for colorful and sharp stills and videos, the Micro 3.0 Sea Dragon Pro 3000 Set includes the Sea Dragon 3000F Photo-Video Light, Micro 3.0 Camera, Flex-Connect® Single Tray, and Grip for stability and handling. The Sea Dragon 3000F Light has a Color Rendering Index of 80, 5000k color temperature to simulate natural sunlight, adding beautiful colors to underwater photos and videos.



Micro 3.0 Pro Duo 5000 Set
Item SL553
The Micro 3.0 Pro Duo 5000 Set combines two sun-like Sea Dragon 2500F Lights with the Micro 3.0 camera to create the a versatile package for the underwater photographer. The set packs an astonishing 5000 lumens, capturing rich and natural color in underwater photos and videos while the ergonomic Flex-Connect® Dual Tray, Grips, and Flex Arms provide stability and easy handling. Dual lighting also minimizes shadows in your photos and videos.



REEFMMASTER[®] RM-4K

4K Extreme Compact

Compact ultra-high definition underwater camera

Capture **vibrant 14mp still images and brilliant 4K video** with a ultra-compact camera especially designed for the underwater environment. The **ReefMaster RM-4K** makes it possible. Waterproof to 130ft/40m, the ReefMaster RM-4K underwater camera is a game changer in underwater imaging; the housing is robust and designed to be hand-held, tray mounted or worn on your head, mask or body. Unlike cheaper plastic box-style enclosures included with popular action cameras, the unique ReefMaster Dive housing assures consistent waterproof performance with its “Pressure-Lock” sealing system.

The ReefMaster RM-4K pairs easily with a variety of **Sea Dragon Photo/Video Lights**, to add vibrant colors and detail.



The RM-4K features a universal 1/4-20 stainless tripod mount to mount to Flex-Connect and other trays.



The available action camera accessory mount (SL9818) allows you to mount the RM-4K to a wide range of commercially available accessories.

The “Pressure-Lock” thumb screw sealing system ensures your camera stays dry.

REEFMMASTER[®] RM-4K

Ultra Compact Underwater Camera

Item SL350

Experience unparalleled ease-of-use with the ReefMaster RM-4K, featuring a pocket-sized design with a 14 megapixel Panasonic[®] CMOS image sensor and ultra-high definition 4K video. The compact, portable design ensures you can take the ReefMaster anywhere. The built-in Fisheye lens allows you to closely approach your subject while still keeping everything in the picture. And with SeaLife’s know-how in underwater lighting, you’ll easily be able to pair your RM-4K with a variety of Sea Dragon Photo/Video lights for any underwater scene or situation.



Size in Inches 1 2 3 4



Removable, compact inner camera features a 3.0” TFT color LCD screen



TECHNICAL FEATURES

- 14 Megapixel Panasonic[®] CMOS image sensor** for sharp, colorful pictures
- 4K Ultra HD Video at 30fps** and 1080p HD Video at 60fps
- 40m/130ft Compact Underwater Housing**
- Humidity Control** with replaceable Moisture Muncher dry capsules
- Wide Angle Fisheye Lens** to get close to your subject & get everything in the picture
- 2.0” TFT color LCD Display** to keep you on your subject and for quick review of your underwater adventure

SPECIAL FEATURES

- Waterproof to 130ft / 40m** using “Pressure-Lock” thumb screw sealing system
- Easy 4 button controls** for easy operation
- WiFi** to wirelessly preview, download and share pictures & videos to smart phone or tablet with a free app from Google or Apple
- Expandable memory** with micro SDHC memory card up to 128GB
- Compact design** for easy handling and lightweight travel
- Removable Li-ion rechargeable battery** (1100 mAh / 3.8V / 4.2Wh for 2+ hours video or 500+ images)
- Focus from 12” (30cm) to infinity** – optional Macro Lenses available
- Time lapse shooting at set time intervals** – saves as video file or series of still images
- Expandable with one or more SeaLife Sea Dragon Photo/Video Lights**

REEFMMASTER[®] RM-4K

Camera & Light Set



ReefMaster RM-4K Camera & Light Set

Item SL354

Add the Sea Dragon 2000F Photo/Video Light to the RM-4K, and shoot vivid underwater colors in both still images and videos. The wide beam angle of the Sea Dragon 2000 complements the camera for nearly complete coverage of the shooting angle. The set includes the RM-4K camera, Flex-Connect Micro Tray, Grip, and Sea Dragon 2000F light.





The SeaLife **SportDiver** underwater housing works with iPhone® models 7, 7 Plus, 8, 8 Plus, X, Xr, Xs, Xs Max, 11, 11 Pro Max, SE (2nd Gen), 12, 12 Mini, 12 Pro and 12 Pro Max running iOS 13* or higher. The free SportDiver app captures photos and video directly to your iPhone's camera roll. The app also allows you to control advanced camera settings, like Zoom, Lens selection, Exposure, Focus, White Balance, Tint, RAW capture, Live Photo and Background Blur, as if you were using a more sophisticated underwater camera. The SportDiver offers fast and easy playback, and the clear back of the housing has a full unobstructed view of your screen and underwater environment.



Includes external underwater color-correction filter

• • Dual leak alarms continuously monitor waterproof seal

SportDiver™ Underwater Housing for iPhone *Item SL400*

The **SportDiver** offers unique visual and audible protection features for your phone, including a vacuum pressure alarm that checks the waterproof seal integrity before your dive and a moisture sensor that alerts you in the unlikely event a leak is detected. We've produced over 20 generations of underwater cameras and housings, and SeaLife brings a wealth of experience with the design and performance of the SportDiver.



- TECHNICAL FEATURES**
- Works with iPhone®** 7, 7 Plus, 8, 8 Plus, X, Xr, Xs, Xs Max, 11, 11 Pro Max, SE (2nd Gen), 12, 12 Mini, 12 Pro and 12 Pro Max
 - Easy control** – Large shutter lever and rear control buttons for easy operation, even with dive gloves
 - Access popular camera settings** – Get creative with your shot by using advanced settings
 - Shoot photos or record video** – Easily switch between photo and video mode
 - Dual Leak Alarms** – Includes internal moisture alarm and internal vacuum pressure alarm
 - Removable underwater color-correction filter** for bright, colorful underwater photos & videos
 - Includes SeaLife SportDiver camera app for iOS** – Free download in App Store
 - Bluetooth® wireless technology** – Housing automatically connects to your iPhone®
 - Holding spring and rubber grip tabs** securely holds iPhone® in place and adds shock-protection
 - Expandable** with Sea Dragon underwater photo-video lights
 - Triple 1/4-20 tripod mounts** – Mounts to Flex-Connect or any tray with standard tripod threads
 - Cam-lock sealing mechanism** easily and securely locks waterproof door
 - Powered by two AAA batteries** that last over 50 hours of continuous use
 - Anti-fog design** when SL911 Moisture Muncher capsule is used
 - Depth rated to 130ft / 40m** – Each housing is individually depth tested
 - Playback photos and videos** – App Playback mode shows full size photos and videos with vertical thumbnail strip to easily locate your shots

SportDiver™ Camera & Light Set

SportDiver Pro 2500 Set *Item SL401*

The SeaLife **SportDiver Pro 2500 Set** is a compact and lightweight underwater housing for Apple's iPhone for use down to 130 feet or 40 meters. The SportDiver can hold the iPhone 7 through the latest iPhone 12 Pro Max models.

The SportDiver Housing includes the 2500 Lumen "Sea Dragon" Photo-Video Light for brilliant and colorful underwater images and video, and is accompanied with a grip and tray for smooth, steady imaging. When you're not using the SportDiver with the light, a removable underwater color-correction filter is included with the SportDiver that restores natural underwater colors, it easily attached or removes underwater.



Bring out vibrant colors
with Sea Dragon Photo/
Video lights and strobes

Sea Dragon Photo/Video Lights

Lighting, whether by strobe or LED, is the single most important underwater imaging feature next to your camera.

With SeaLife’s Sea Dragon lights, you’ll get the brightness, color rendering, temperature, and beam angle to produce amazing magazine quality stills and brilliant underwater video.

The Sea Dragon 3000F uses a flat panel COB LED array that closely mimics natural sunlight.



Without Photo/Video Light



With Photo/Video Light

Pro Tip: “Artificial lighting is essential to bring out vibrant color and crisp contrast in underwater photos. These colors are lost as we dive deeper, so the flash or light illuminates the colors otherwise lost in a sea of blue. Subjects close to the camera will benefit most.”

- Brent Durand
Professional Underwater Photographer



Sea Dragon 2000F Item SL677

The new Sea Dragon 2000F Photo/Video Light delivers 2000 true lumens and a smooth, even 120° wide beam angle. This revolutionary COB LED technology produces an 80 CRI (color rendering index) that mimics natural daylight.

Most other LEDs have 70 CRI, missing wavelengths of the visible light spectrum. Uncover colorful reefs and hidden sea creatures with this photo/video light. Includes Flex-Connect Micro tray and grip.

Item SL6770: Sea Dragon 2000F Light Head



Sea Dragon 2500F Item SL671

The Sea Dragon 2500F uses flat panel COB LED technology to closely mimic natural sunlight, bringing out amazing colors in underwater photos and videos.

With a Color Rendering Index of 90, the Sea Dragon 2500F solves the issue of dark, blue underwater photos and videos by adding brilliant light down to 330 feet/100 meters.

Item SL6712: Sea Dragon 2500F Light Head



Sea Dragon Flash Item SL963

Universally compatible with SeaLife and most other cameras using an internal flash, the Sea Dragon Flash features variable power adjustment and large controls to easily fine tune brightness.

In **Auto Mode**, the flash will automatically adjust brightness for optimal exposure. The Sea Dragon Flash automatically “learns” your camera’s pre-flash.

Includes optical cable, 7mm cable plug, universal flash link adapter, diffuser, single tray, grip and case.

Item SL9631: Sea Dragon Universal Flash Head



The diffuser provides a wide 100° beam, spread evenly, preventing hot spots.

Sea Dragon 3000F Auto Item SL678

The Sea Dragon 3000F Auto delivers 3000 lumens over 120° smooth, even beam angle without a hot spot. **Two red LEDs** emit a 88° wide “stealth mode” beam that won’t scare away nighttime sea creatures and preserves your eye’s natural night vision. Powered by a rechargeable 25Wh lithium ion battery, the light burns for a full hour at 100% power at constant brightness with its new COB LED 120° beam angle. Depth rated to 330ft / 100m.

The Sea Dragon 3000F Auto includes a Flex-Connect Grip and single tray. Easily expandable with Flex-Connect Grips, Arms, and Trays.

Also available as a light head (SL6780).



SeaLife’s Auto Modes

Select the **Auto Bright Mode** and the 3000F light’s photocell light sensor will automatically regulate brightness based on proximity to the object in 10-step brightness levels; look at something close like a gauge or your computer, and the light will reduce to 10% brightness output; look at a long distance, and the light automatically adjusts to full power.

The **Auto Bright Mode** can be easily over-riden if a constant brightness level is preferred by simply selecting the 100%, 50% or 25% brightness through the main control button.

Two red LEDs create a “stealth mode” beam.



The Sea Dragon 3000F Auto’s **Auto Flash Detect Mode** turns the light off for one second when an external flash is detected. This assures a well lit photo and prevents shadows in your images. Auto Flash Detect Mode can also be turned off if this feature is not desired.

Sea Dragon Pro Series Auto Photo/Video Lights

With SeaLife's **Sea Dragon lights**, you'll get the **brightness, color rendering, temperature, and beam angle** to produce **magazine quality stills and brilliant underwater video**.



Pro Tip: Capturing Quick Creatures By Tobias Friedrich
Lembeh Strait, North Sulawesi, Indonesia

Quick swimming clownfish are not always easy to catch with a camera. So take focus on a point of the anemone where the fish will be likely to appear, and press the shutter button quickly once it swims into focus.

Equipment: SeaLife DC2000, 2x Sea Dragon 5000F, Super Macro Lens
Settings: ISO 125, f/2.2, 1/80s

Tobias Friedrich started taking underwater photos in 2007. Since then his images have been published in prestigious scuba diving magazines such as Sport Diver, Unterwasser, Tauchen, Scuba Diver, Through The Lens and many others.



Shoot with 10,000 lumens with 2x 5000F Auto lights, plus the Flex-Connect Dual Tray Kit



Sea Dragon 5000F Auto Item SL676

The **Sea Dragon 5000F Auto** combines a new compact head design with new features and a boost in lumen output. The even 120° wide beam that runs for 50 minutes at the highest power setting. Two 88° 220 lumen red LEDs give you a stealth mode that allows approach and image capture of nighttime sea creatures with the light's Flash Detection feature turning the light off when a strobe is used. The 5000 lumen COB LED maintains an impressive 96 CRI and 97 TLCI value. Four manual power settings, automatic brightness setting based on distance to the subject, and red light.

Includes Standard YS Mount , 1" Ball Mount, & Flex-Connect YS Adapter.



Two red LED's emit 180 lumens, 88° wide beams "stealth mode" that won't scare away nighttime sea creatures and preserves your eye's natural night vision.

Why an Auto (Automatic) Light?

Auto" lights offer two distinct features over other underwater lights: **The Auto light automatically adjusts brightness to the optimal amount needed to see or shoot pictures/videos.** This will save battery power for longer run time and preserve your eye's natural low-light vision. A light sensor on the front face of the light constantly measures the amount of light reflecting back from the object. The light will dim when aimed at close-up objects and increase brightness [to full brightness] at far away objects. Auto lights also include manual brightness control if you prefer consistent light output.

The other purpose of the Auto light is to detect when your external flash (strobe) flashes, and temporarily turns off the photo/video light for one second. This prevents unwanted shadows and backscatter that may be caused by the photo/video light. You can easily enable or disable the Auto Flash detect feature.

Photo Light Sensor



The **Sea Dragon 5000F** comes with a standard YS Adapter and Flex-Connect Adapter, for easy expansion with any YS compatible arms or with SeaLife's Flex-Connect system of arms, grips, trays and mounts.



Sea Dragon 5000F Features: COB LED

**Auto Flash Detect Mode
& Auto Brightness Mode**

5000 lumen white flood

**100%, 75%, 50%, 25%, Auto, Red Light,
SOS and Emergency Blinking Mode**

***120° beam angle above water and 90° underwater**

**50 minute run time (full power); up to 3.3 hours at 25% power
(using 50Wh Li-ion rechargeable battery pack)**

Depth rated to 330ft / 100m

Compact/Handheld Lights



Sea Dragon Mini 1000F Item SLKIT07

The Sea Dragon Mini 1000F offers a ultrawide 130° beam that mates perfectly with an action camera as a primary light source, or on larger cameras as a very capable focusing light. Easy one button operation with a back-lit three color battery status indicator. 90 minute run time at full power, 180 minutes at half power (with optional 18650 3500mAh 3.7V battery). The wide 1000 lumen beam is a compact solution for photos, videos and wide area illumination. See next page for detailed features.

Includes 18650 2600mAh 3.7V battery (65 minutes of run time at full power), 18650 USB Battery Charger, YS mount, GoPro camera mount and AquaPod pole adapter, lanyard with BC clip, spare O-rings and lube.



Easily mount the Sea Dragon 1000F onto the Flex-Connect system.

This light also includes a GoPro® Camera mount.

Sea Dragon Mini 900S Item SLKIT06

With the Sea Dragon Mini 900 Underwater Dive Light, a high intensity long-range beam meets ultra-compact design. The Mini 900 features a 14° spot beam and three easy one-handed access power levels plus emergency one-second and SOS flash. A heavy duty BC lanyard and clip is included. The light runs on two CR123 or a single rechargeable 18650 Li battery.

Includes 18650 2600mAh 3.7V battery, 18650 USB Battery Charger, lanyard with BC clip, spare O-rings and lube.



SPECIAL FEATURES

- CREE XM-L2 T6 LED
- 100%, 50%, 25%, one second blink, emergency SOS
- 14° beam angle (10.5° underwater)
- 120 minute run time (full power); up to 8 hours at 25% power (using 3500mAh Li battery)
- Depth rated to 330ft / 100m

Sea Dragon Mini 1300S Item SLKIT08

The Sea Dragon Mini 1300S Underwater Dive Light gives you a tight, high intensity long-range beam for maximum distance. The Mini 1300 features a 8° spot beam and three easy one-handed access power levels plus emergency one-second and SOS flash. A heavy duty BC lanyard and clip is included. The light runs on two CR123 or a single rechargeable 18650 Li battery.

Includes 18650 2600mAh 3.7V battery, 18650 USB Battery Charger, lanyard with BC clip, spare O-rings and lube.



SPECIAL FEATURES

- Luxeon V LED
- 100%, 50%, 25%, one second blink, emergency SOS
- 8° beam angle (6° underwater)
- 85 minute run time (full power); up to 5.5 hours at 25% power (using 3500mAh Li battery)
- Depth rated to 330ft / 100m



Turn-key Mini lights include everything you need for your dive



We combine the Mini 900S, 1000F and 1300S Dive lights with a high performing safety tested XTAR 18650 2600 mAh battery, along with a compact USB Mini Charger. The USB Mini charger works with common 5-watt USB power adapters, or it can be plugged into your computer's USB port for charging.

If the need arises, in case of loss or damage to the 18650 rechargeable battery, you may still use two CR123 single use Li batteries with these lights.

Discover the World of Fluoro



Sea Dragon Fluoro-Dual Beam Item SL673

In partnership with Fire Dive Gear, SeaLife developed their Sea Dragon Fluoro-Dual Beam that emits a powerful blue light beam and adds an integrated dichroic filter creating the optimal light wavelength to excite underwater life. The integrated LED driver circuitry allows the light to operate at constant brightness throughout the battery life, so the light will not dim as battery power is reduced.

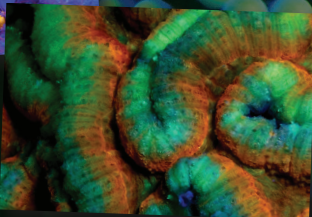
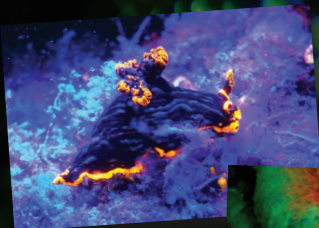
Switchable beams quickly adjust with the push of a button from blue fluoro 65° flood to white 800 lumen 15° spot, making the Fluoro-Dual Beam a truly versatile dive light. A removable 25Wh lithium ion battery delivers power for a full 60 minutes at full fluoro brightness.

The Sea Dragon Fluoro-Dual Beam also includes two essential **yellow barrier filters**; one for optimal fluoro-viewing and a universal lens cover for imaging.

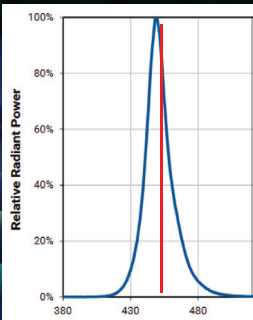


The Fluoro-Dual Beam includes a Flex-Connect grip, single tray and SL995 Ball Joint Adapter for a universal fit.

800 lumens
65° + 15° beam + spot



Why use a dichroic filter? The CREE Royal Blue LEDs emit a light wavelength that ranges between 440nm and 465nm, but a tighter 455nm wavelength is needed for an optimal fluoro effect.

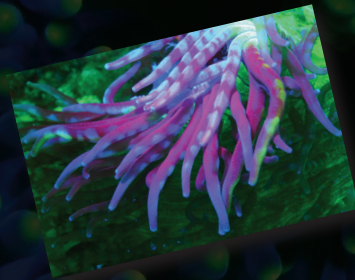


SPECIAL FEATURES

- CREE XT-E Royal Blue LED with Integrated Dichroic filter
- 7 watt/m² brightness at full power, 4.3 W/m² at medium and 2.1 W/m² at low power
- 14° beam angle above water and 10.5° underwater
- 120 minute run time (full power); up to 8 hours at low power (using 3500mAh Li battery)
- Depth rated to 330ft / 100m

Sea Dragon Mini Fluoro Item SL655

The **Sea Dragon Mini Fluoro** Underwater Fluoro Light's royal blue LED emits a blue light combined with a finely tuned and proprietary dichroic filter that pinpoints the exact light wavelength to get the highest energy response from the underwater plant or creature for an amazing underwater light show. The light functions are easy, with simple one handed operation and three Fluoro power levels. And to eliminate any excess blue light, a yellow barrier mask filter is included. Runs on two CR123 or a single rechargeable 18650 Li battery (batteries not included).



The Sea Dragon Mini Fluoro also comes with a mask filter.



COB Auto Photo/Video Lights



Sea Dragon 5000F Auto
Item SL676

Light Source	COB LED Luminus XNOVA Studio	1x COB LED Bridgelux Gen 7 Vero 2x CREE XP-E red LEDs
Brightness	White Light: 5000 Lumens Red Light: 220 Lumens	White Light: 3000 Lumens Red Light: 180 Lumens
Brightness Levels	100%, 75%, 50%, 25%, Auto, Red	100%, 50%, 25%, Auto, Red
Light Modes	Automatic, constant or emergency signal	Automatic, constant or emergency signal
Color Temperature	5600k	5000k
CRI*	96	80
Beam Angle	120°	120°
Battery	Lithium Ion 14.8V, 3400 mAh, 50Wh (included)	Lithium Ion 7.4V, 3400 mAh, 25Wh (included)
Run Time (@100%)	50 minutes	60 minutes
Depth	330ft / 100m	330ft / 100m
Head Only Item	N/A	Item SL6780
Included Tray/Grip	YS Mount, YS & 1" Ball Joint adapter, Sea Dragon Case	Single Tray, Grip, Sea Dragon Case, GoPro® camera adapter



Sea Dragon 2500F
Item SL671



Sea Dragon 2000F
Item SL677



Sea Dragon Mini 1000F
Item SLKIT07

Light Source	COB LED Bridgelux Vero 18	COB LED CREE CXA1816	Luxeon V LED
Brightness	2500 Lumens	2000 Lumens	1000 Lumens
Brightness Levels	100%, 50%, 25%	100%, 50%, 25%	100%, 50%, 25%
Light Modes	Constant or emergency signal	Constant or emergency signal	Constant, Emergency SOS or Emergency Blink
Color Temperature	5000k	5000k	6000k - 6500k
CRI*	90	80	70
Beam Angle	120°	120°	130°
Battery	Lithium Ion 7.4V, 3400 mAh, 25Wh (included)	Lithium Ion 7.4V, 3400 mAh, 25Wh (included)	18650 Li-ion 2600mAh rechargeable battery (included)
Run Time (@100%)	60 minutes	60 minutes	60 minutes
Depth	330ft / 100m	330ft / 100m	330ft / 100m
Head Only Item	Item SL6712	Item SL6770	N/A
Included Tray/Grip	Single Tray, Grip, Sea Dragon Case, GoPro® camera adapter	Micro Tray, Grip, GoPro® camera adapter	N/A

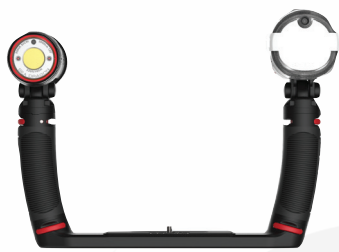


Sea Dragon 3000F Auto
Item SL678

Strobes



Sea Dragon
Universal Flash
Item SL963



Sea Dragon Duo
3000 Flash
Item SL690



Sea Dragon Duo
X2 Flash
Item SL988

Light Source	1 x XENON Flash Tube	COB LED Bridgelux Vero 18 3000 (Auto) 1 x XENON Flash Tube (Flash)	2 x XENON Flash Tube
Brightness	Guide Number 20 66' (20m) full power/ 5' (1.5m) low	3000 / Flash	Guide Number 20 66' (20m) full power/ 5' (1.5m) low
Brightness Levels	Manual 8% to 100%, Auto	100%, 50%, 25%, Auto / Flash	Manual 8% to 100%, Auto
Light Modes	Automatic or manual	Constant, Auto, Flash	Automatic or manual
Color Temperature	5700k, 5400k (diffuser)	5000k ~ 6000k	5700k, 5400k (diffuser)
CRI*	98	80 / 98	98
Beam Angle	80° horizontal x 60° vertical, 100° x 100° (diffuser)	120° x 100°	80° horizontal x 60° vertical, 100° x 100° (diffuser)
Battery	4 AA Batteries (not included)	Lithium Ion 7.4V, 3400 mAh 25Wh (3000 Auto) (included) / 4AA (Flash) (not included)	8 AA Batteries (not included)
Run Time (@100%)	250 flashes at full brightness (with Energizer Lithium AA)	60 minutes / 250 flashes	250 flashes at full brightness (with Energizer Lithium AA)
Depth	200ft / 60m	200ft / 60m	200ft / 60m
Head Only Item	Item SL9631	Item SL6780 / Item SL9631	Item SL9631
Included Tray/Grip	Single Tray, Grip, Sea Dragon Case	Dual Tray, 2x Grip, Travel Case, GoPro® camera adapter	Dual Tray, 2x Grip, Travel Case, GoPro® camera adapter



Sea Dragon Duo 5000
Item SL989



Sea Dragon Duo 6000
Item SL691



Sea Dragon Duo 10,000
Assembled Set

Light Source	2x COB LED Bridgelux Vero 18	2x COB LED Bridgelux Gen 7 Vero 4x CREE XP-E red LEDs	2x COB LED Luminus XNOVA Studio
Brightness	2x 2500 Lumens	2x 3000 Lumens	White Light: 5000 Lumens Red Light: 220 Lumens
Brightness Levels	100%, 50%, 25%	100%, 50%, 25%, Auto, Red	100%, 75%, 50%, 25%, Auto, Red
Light Modes	Constant or emergency signal	Automatic, constant or emergency signal	Automatic, constant or emergency signal
Color Temperature	5000k	5000k	5600k
CRI*	90	80	96
Beam Angle	120°	120°	120°
Battery	Lithium Ion 7.4V, 3400 mAh, 25Wh (included)	Lithium Ion 7.4V, 3400 mAh, 25Wh (included)	Lithium Ion 14.8V, 3400 mAh, 50Wh (included)
Run Time (@100%)	60 minutes	60 minutes	50 minutes
Depth	330ft / 100m	330ft / 100m	330ft / 100m
Head Only Item	Item SL6712	Item SL6780	Item SL676
Included Tray/Grip	Dual Tray, 2x Grips, Travel Case, GoPro® camera adapter	Dual Tray, 2x Grips, Travel Case, GoPro® camera adapter	Requires 2x SL676 Sea Dragon 5000F; plus 1x SLKIT03 Flex-Connect Dual Tray Kit, (optional/sold separately)

All lights feature a battery over-pressure safety release valve. The beam angles for the Sea Dragon lights are shown as the true, tested “in-air” (above water) beam angle. Due to light refraction, the angle tightens to approximately 33% less underwater (i.e. 120° = 90° underwater).

*CRI = Color Rendering Index

SeaLife's precision macro lenses capture every detail



Super Macro Lens for Micro Series & RM-4K

Item SL571

The Super Macro Lens captures the intricate details of your photo and video subjects from 3.5" to 7" (9cm to 18cm). Features 2-element optical grade wet lens with anti-reflective coating and anodized aluminum construction with rubber press-on lens mount. Includes two removable focus distance sticks, safety lanyard and protective pouch. For all Micro Series and RM-4K models.



Close Up Lens for Micro Series & RM-4K

Item SL572

This +10 Diopter Close Up Lens cuts the close focus range to less than half (approximately 6"-24" or 15cm to 60cm). Features a single element optical grade wet lens with anti-reflective coating and anodized aluminum construction surrounded by a durable rubber press-on lens mount. Includes safety lanyard and protective pouch. For all Micro Series and RM-4K models.



DC-Series Super Macro Lens

Item SL976

Capture sharp details of tiny sea creatures from 1.5" to 4" (DC2000; 4cm to 10cm). Works with SeaLife DC-series and most other point and shoot cameras. Easy push-on mount with AR coated 2-element optical grade lens. Fits cameras with 52mm lens mount and DC-series with included adapter.

Photo by Tobias Friedrich, DC2000 & DC-Series Super Macro Lens

SeaLife's Wide Angle lenses expand your underwater horizon



Universal 0.75x Wide Angle Conversion Lens

Item SL051

With the SeaLife 0.75x Wide Angle Conversion Lens, you can stay within the shooting range of your flash and still fit everything in the shot. The lens compensates for the water's magnification effect, increasing underwater shooting angle by 33%. Fits cameras with 52mm lens mount and DC-series with included adapter.



Lens Caddy for Micro, ReefMaster & DC-Series Lenses

Item SL091

The SeaLife Lens Caddy mounts SeaLife DC, Micro and RM-4K series lens to a camera or tray using the standard 1/4-20 tripod screw or to any grip/arm up to 1.8" (45mm) in diameter using a sturdy hook & loop nylon strap. The Lens Caddy holds any DC series lens, or Micro and RM-4K series lenses SL571 & SL572.

Photo by Tobias Friedrich, DC2000 & DC-Series 0.5x Wide Angle Dome Lens





AquaPod Mini

Item SL912

The SeaLife AquaPod Mini allows you to shoot pictures and videos from creative viewing angles, take self-portraits, and capture close up photos and videos of your subject while maintaining your distance. The AquaPod Mini's corrosion-proof design assures years of use in a saltwater environment. The AquaPod Mini (extends from 15.5in to 38in / 39.3cm - 97cm) fits all cameras with the included 1/4-20 standard tripod mount and adapter for GoPro® cameras.



SeaLife Photo Pro Backpack

Item SL940

The active diver requires more than just a gear bag for camera gear: You need a pack that travels well, is compact enough to fit into the overhead bin or under the seat in small island hopping commuter aircraft, and offer all the storage solutions for your photo gear. The SeaLife Photo Pro Backpack features a waterproof interior, to keep surrounding compartments dry and to keep moisture out.

The interchangeable, multi-compartment interior design fits photo gear up to a full sized camera and housing with several lights or strobes, such as the **Micro 3.0 Pro 5000 Duo Set**, plus one or two lenses, batteries and all charging accessories. There's a separate compartment for a tablet or small notebook PC, and deep side pockets to accommodate a monopod or tripod.



The internal compartments create secure, cushioned homes for your camera equipment. Easily movable dividers allow you to create the perfect compartments to hold your gear.



SeaLife Soft Lined Neoprene Gear Pouch

Item SL933

The SeaLife Protective Gear Pouch is a soft lined pouch that protects lenses, cameras, lights and other precision dive gear. The Gear pouch's soft velvet interior prevents scratches on sensitive optics and electronics. This pouch is especially recommended for lens storage in the photo backpack or your photo equipment case.



Flex Arm

Item SL9901

Expand your camera set with one "click." Flex Arms feature 100° of bending motion, add 7 inches in length and allow you to direct light wherever you need it. Add up to two arms per side.



Grip

Item SL9905P

The rubber-armored grip provides comfortable and improved handling for your light, flash, or underwater camera set. It "clicks" directly into any Flex-Connect Tray and accepts all Sea Dragon Light and Flash heads.



Cold Shoe Mount

Item SL991

Use the Flex-Connect Cold Shoe Mount to mount a light, flash or action camera directly to the cold shoe of your camera.



Handle

Item SL998

Use a powerful Sea Dragon Light as a handheld dive light by connecting it to the ergonomic Flex-Connect Handle. The base features stainless 1/4-20 threads to attach a D-ring for a lanyard, or mount a camera.



8"/20cm Rigid Ball Arm

Item SL9909

Rigid, 8"/20cm anodized aluminum 1" ball arm. Fits to 1" ball clamps for a rigid mounting solution. Use with SL9907 clamp and SL995, SL999 ball joints.



YS Adapter

Item SL994

Connect any underwater light or flash that uses a YS Mount to Flex-Connect accessories including grips, trays, Flex Arms, and Cold Shoe Mount.



Dual Tray

Item SL9904

Single Tray

Item SL9903P

Micro Tray

Item SL9902

The compact Micro Tray is perfect for adding light and stability to your ultra-compact camera, while the Dual Tray expands your camera set with multiple lighting options. A sturdy stainless 1/4-20 mounting bolt holds your camera in place on the trays' rubber pad.



Quickly and easily expand your camera’s capabilities with SeaLife’s **Flex-Connect** system – add grips, flex arms, trays and other accessories with just a simple “click!”



Accessories & Essentials for your adventure



1-Inch Ball Clamp Item SL9907

Connects two 1-inch diameter ball mounts together. The plates are spring-loaded for easy assembly and breakdown. Its wing-nut handle features an attractive red anodized finish.



Ball Joint Adapters Item SL995 Item SL999

Connect Sea Dragon lights and Flex-Connect accessories to any underwater camera using a standard 1"/25mm ball joint mounting system, or connect any light with a ball joint mount to Flex-Connect accessories.



Connects Sea Dragon Lights to any ball joint system (SL995)

Connects ball joint lights to Flex-Connect system (SL999)



Ball Joint Adapter for Flex-Connect mounts ball joint lights to Flex-Connect system (SL999)



DC-Series 52mm Lens Mount Item SL977 for DC series

The DC Series 52mm thread mount presses on the DC2000 and other DC Series housings. Photographers will now have a wide variety of lenses and filters to choose from. Also available: 52-67mm step up ring (Item SL978).



50Wh Battery for Sea Dragon 4500F & 5000F Lights Item SL67510

Rechargeable lithium ion battery (3400mAh, 7.4V 50Wh) for Sea Dragon 4500 & 5000 Lumen Lights.



Sea Dragon Red Fire Filter Item SL9832

Aids in underwater navigation in darkness so to keep the eyes aware and dilated, this feature also prevents frightening nocturnal sea creatures. Presses on/off underwater and works with all Sea Dragon Lights with 1200 or more lumens (Not for imaging or Sea Dragon 4500/5000).



DC2000 Spare Battery Item SL7404

Rechargeable 3.7V 1130mAh 4.2Wh lithium ion battery for the DC2000 camera. Powers camera for 2+ hours of operation. Can be charged inside the camera through a USB cable and DC2000 wall charger.



SeaLife Gear Retractor Item SL925

Perfect for compact cameras up to the size of Micro 3.0 & compact lights like the Sea Dragon Mini lights, the retractor offers a quick-release clip feature that lets you remove quickly from the attached device, extends 32" (81cm) and has a 9oz. (255g) retraction force. The retracting cord has a 60lb. (27.2kg) breaking strength.



ReefMaster RM-4K Spare Battery Item SL3504

Rechargeable 3.8V 900mAh 3.42Wh lithium ion battery for the ReefMaster RM-4K camera. Powers camera for 2+ hours of operation. Can be charged inside the camera through a USB cable.

flex-connect® Kits Pre-Built Mounting Kits for turn-key convenience



Dual Tray Kit Item SLKIT03

Complete with Flex-Connect Dual Tray, two Grips, two Flex Arms and two YS Adapters, this kit will help you get the most out of your underwater camera. Just add nearly any brand of camera and lights, and you're ready to head into the water. The tray uses a standard ¼-20 tripod mount to fit most major brands of underwater cameras, and the YS adapter and Flex-Connect mounts attach to a wide array of underwater lighting brands.



Single Tray Kit Item SLKIT02

This kit includes a Flex-Connect Single Tray, Grip, Flex Arm and YS Adapter. The tray uses a standard ¼-20 tripod mount to fit most major brands of underwater cameras, and the YS adapter and Flex-Connect mounts attach to a wide array of underwater lighting brands.



15"/38cm Rigid Ball Arm Extension Kit Item SLKIT11

When you want a rigid arm system to support heavier lights or in heavy currents This arm kit includes the new SL9909 Flex-Connect 8" (20cm) 1" Ball arm; one SL995 Sea Dragon Ball adapter; one SL999 Flex-Connect Ball adapter and two SL9907 1" Ball Clamps.



Universal Float Strap Item SL920

Floats all SeaLife cameras as well as most other brands of waterproof cameras and other portable waterproof devices. Recommended for the negatively buoyant Micro HD, Micro HD+, Micro 2.0, and RM-4K cameras.



Screen Shield™ Screen Protector

Waterproof screen protector for the DC2000, Micro 3.0, RM-4K, SportDiver Housing, and other compact cameras with a screen size of 6.8", 3", 2.4", 2" or smaller. The nano coating repels water and keeps the screen free of fingerprints while protecting against scratches.



Sea Dragon Custom EVA Case Item SL942

Thermo-molded EVA case for your camera, light and other accessories. Protective, yet compact. Designed to hold your essential gear and easily fit into your luggage or carry-on bag.



25Wh Battery for Sea Dragon 1200-3000 Lights Item SL9831

Rechargeable lithium ion battery (3400mAh, 7.4V 25Wh) for Sea Dragon 1200, 1500, 2000, 2100, 2300, 2500, 3000 Photo/Video Lights, and Fluoro-Dual Beam. Includes protective cap.



18650 3500 mAh Lithium Ion Battery Item SL9828

XTAR 18650 3.6V 3500mAh Li-Ion rechargeable battery for Sea Dragon Mini 1300S, 1000F, 900S, 650S/F, Fluoro and other brands adds approximately 30% additional burn time over 2600mAh 18650 cell.





18650 USB Mini Charger Item SL9825

Charges 18650 and other Li-ion batteries. Connects to any 5V USB wall charger. Displays charging status and current. Ultra-compact design for easy travel. Includes USB cable and storage pouch. Battery not included.



SeaLife®

Pioneer Research 97 Foster Road, Suite 5 Moorestown, NJ 08057 USA 856.866.9191 info@sealife-cameras.com
sealife-cameras.com  SeaLifeCameras  SeaLifeCameras

Product Features and Specifications may change without notice. © 2021 Pioneer Research, Item SL816